

MidAmerica St. Louis Airport

O'Fallon-Shiloh Chamber Economic Development Committee

11 May 2023

Bryan E. Johnson, A.A.E. | Airport Director

Scott Air Force Base



Joint-Use Agreement (USAF and St. Clair County – 1991)

- Colonel Chris Robinson
- Air Force – 375th Air Mobility Wing (C-21 aircraft – Learjet)
- Air Force Reserves – 932nd Airlift Wing (C-40 aircraft – B737)
- IL Air National Guard – 126th Refueling Wing (KC-135 aircraft – B707)

MidAmerica St. Louis Airport (BLV)

ECONOMIC ENGINE

Total Employment – 23,442

Total Labor Income – \$1.9 billion

Total Business Revenue – \$3.0 billion

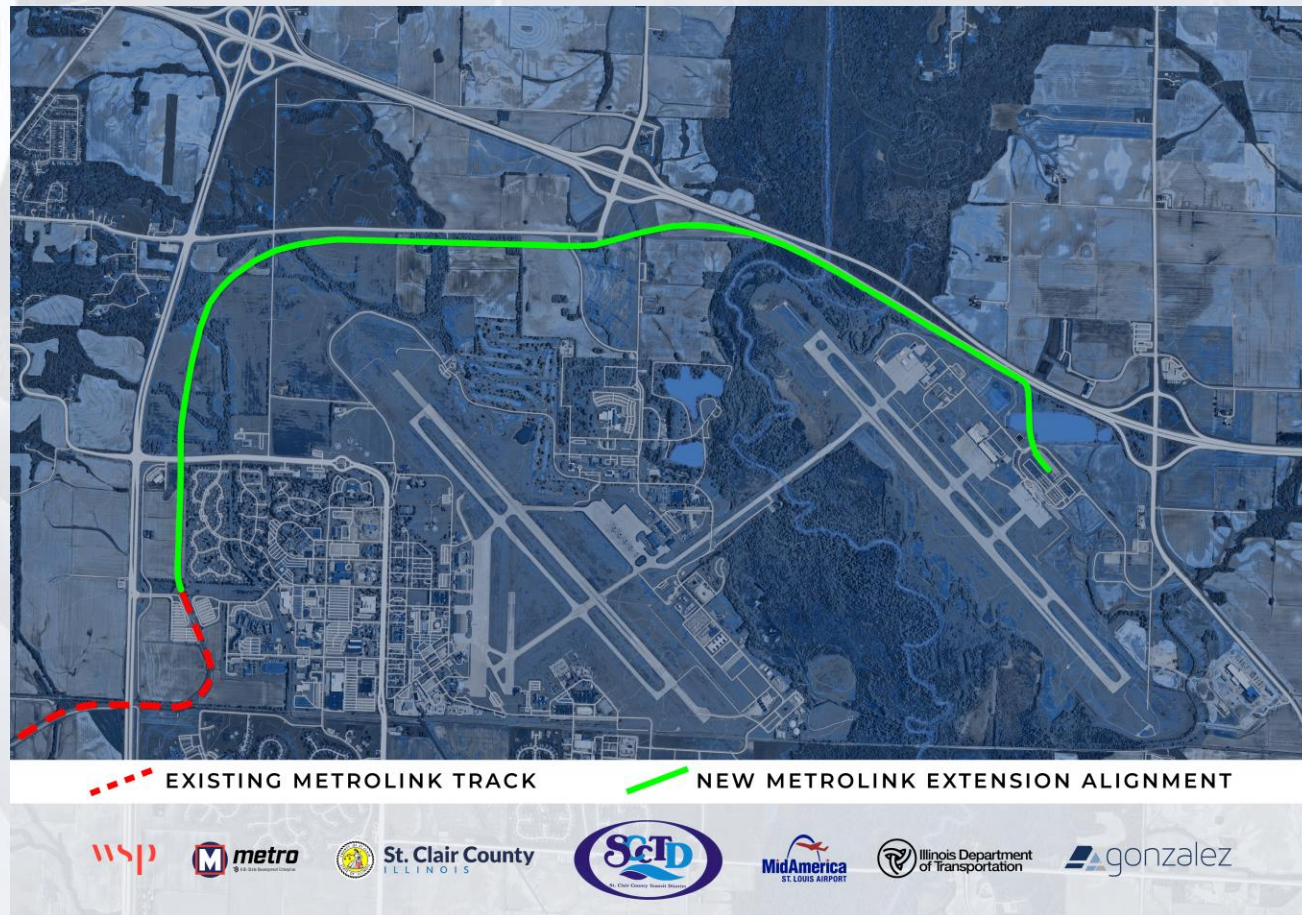


Source: Illinois – Division of Aeronautics (2021)

MetroLink Extension To Airport | BLV-STL



MetroLink Extension To Airport | BLV-STL



Aviation History...Your Future Is Built Here



Boeing – MQ25 Production Facility 2024



Boeing – MQ25 Production Facility 2024



Boeing – MQ25 Production Facility 2024



Boeing – MQ25 Production Facility 2024



Taxiway LIMA 2023

Taxiway Lima Facts

- Cost - \$37M – funding by grants from IDOT and DECO
- Completion date – July 1, 2023
- TWY L – 3,100 feet with 80,000 SF bridge over Crooked Creek
- Airplane Design Group (ADG) IV – B767, A310, C17
- General Contractor – Plocher Construction Company (Highland, IL)
- Access to Boeing Production Facility and Future Aviation Development
- Ensures development opportunities for both domestic and international aviation firms
- Incorporates principles and practices associated with environmental, economic, and social sustainability

Source: FAA 150/5300-13 The Airplane Design Group (ADG) is an FAA-defined grouping of aircraft types which has six groups based on wingspan and tail height

Taxiway LIMA 2023



Taxiway LIMA 2023



BLV RECORD Enplanements – 2021 & 2022!

4	GL	IL	ORD	Chicago	Chicago O'Hare	P	L	26,350,976	14,606,034	80.41%
26	GL	IL	MDW	Chicago	Chicago Midway	P	L	7,680,617	4,236,603	81.29%
160	GL	IL	MLI	Moline	Quad Cities International	P	N	246,248	149,533	64.68%
164	GL	IL	PIA	Peoria	General Downing - Peoria	P	N	237,442	159,777	48.61%
186	GL	IL	BLV	Belleville	Scott AFB/Midamerica St	P	N	161,562	108,765	48.54%
188	GL	IL	BMI	Bloomington-	Central II	P	N	159,897	89,759	78.14%
214	GL	IL	RFD	Rockford	Chicago/Rockford	P	N	102,779	79,674	29.00%
249	GL	IL	SPI	Springfield	Abraham Lincoln Capital	P	N	60,949	34,486	76.74%
256	GL	IL	CMI	Savoy	University of	P	N	56,700	35,874	58.05%
393	GL	IL	MWA	Marion	Veterans Airport of	P	N	10,522	5,783	81.95%

Record Enplanements!

2021 – 161,562 (actual)

2022 – 163,710 (forecast)

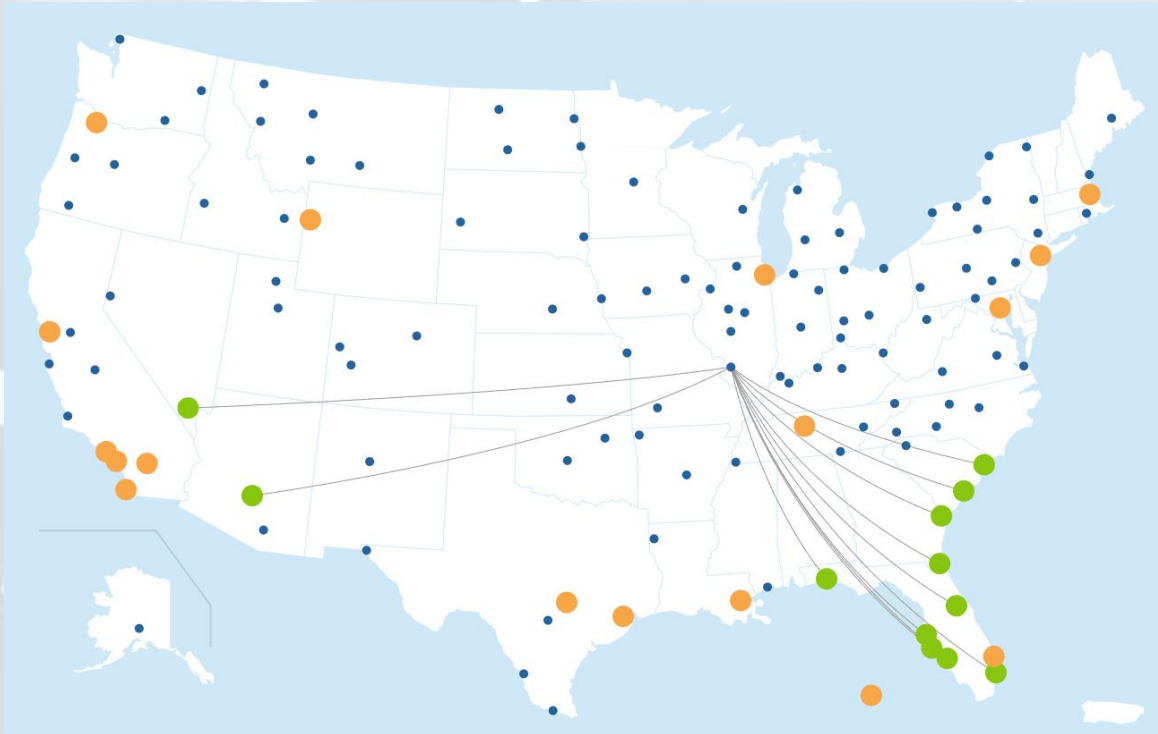
Congressman Bost – CDS Funding FY2023 \$3.25M – Federal Inspection Station

Congressman Bost, Senator Durbin – CDS Funding FY2024 \$2.5M – Terminal Apron

Illinois Airports & Enplanements

Rank	RO	ST	Locid	City	Airport Name	S/L	Hub	CY 21 Enplanements	CY 20 Enplanements	% Change
4	GL	IL	ORD	Chicago	Chicago O'Hare International	P	L	26,350,976	14,606,034	80.41%
26	GL	IL	MDW	Chicago	Chicago Midway International	P	L	7,680,617	4,236,603	81.29%
160	GL	IL	MLI	Moline	Quad Cities International	P	N	246,248	149,533	64.68%
164	GL	IL	PIA	Peoria	General Downing - Peoria International	P	N	237,442	159,777	48.61%
186	GL	IL	BLV	Belleville	Scott AFB/Midamerica St Louis	P	N	161,562	108,765	48.54%
188	GL	IL	BMI	Bloomington-Normal Airport	Central Illinois Regional/Bloomington-Normal	P	N	159,897	89,759	78.14%
214	GL	IL	RFD	Rockford	Chicago/Rockford International	P	N	102,779	79,674	29.00%
249	GL	IL	SPI	Springfield	Abraham Lincoln Capital	P	N	60,949	34,486	76.74%
256	GL	IL	CMI	Savoy	University of Illinois/Willard	P	N	56,700	35,874	58.05%
393	GL	IL	MWA	Marion	Veterans Airport of Southern Illinois	P	N	10,522	5,783	81.95%
406	GL	IL	DEC	Decatur	Decatur	CS	None	9,001	3,429	162.50%
427	GL	IL	UIN	Quincy	Quincy Regional-Baldwin Field	CS	None	7,418	4,929	50.50%

Air Service Development



Allegiant Air (current routes)

1. Charleston SC (CHS)
2. Daytona Beach /Orlando/Sanford FL (SFB)
3. Destin/Ft. Walton Beach FL (VPS)
4. Ft. Lauderdale/Miami FL (FFL)
5. Jacksonville FL (JAX)
6. Las Vegas NV (LAS)
7. Myrtle Beach SC (MYR)
- ~~8. Phoenix/Mesa AZ (AZA)~~
9. Punta Gorda/Ft. Myers FL (PGD)
10. Sarasota/Bradenton FL (SRQ)
11. Savannah GA/Hilton Head SC (SAV)
12. St. Pete/Clearwater/Tampa FL (PIE)

Air Service Development

MidAmerica St. Louis Airport - **Air Service FUTURE!**

- BLV to become Allegiant 'base' - \$70M into local economy
 - When? Q1-2025
- Airline Outreach
 - Allegiant
 - Viva Aerobus
 - Breeze
 - Southwest
 - Avelo



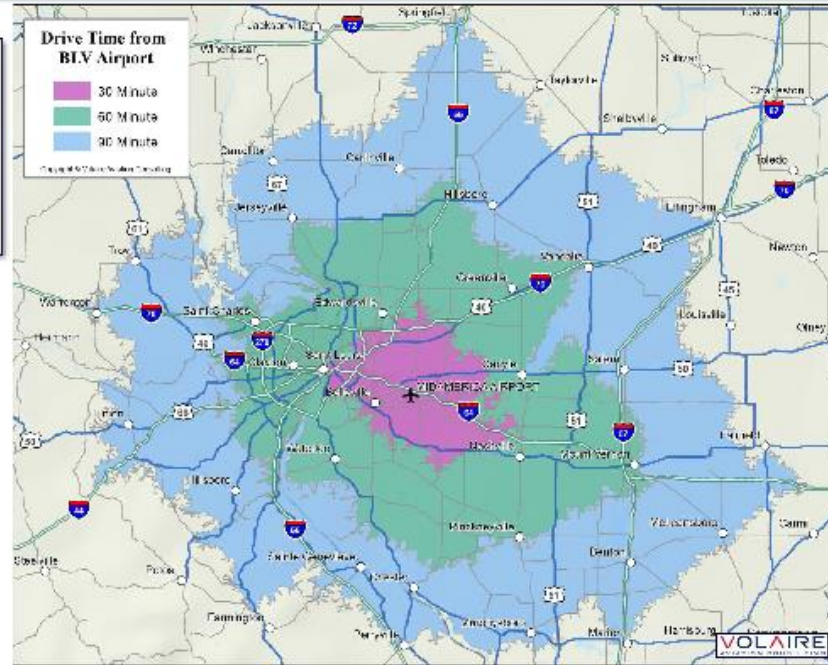
Air Service Development

> ALLEGIANT DRAWS FROM A WIDE AREA OF ILLINOIS AND MISSOURI AT BLV, WITH MORE THAN 3.3 MILLION RESIDENTS

The 90-minute drive time to MidAmerica St. Louis Airport is home to 3.3 million people as of the latest US Census estimates.

This includes all of the St. Louis metro area, which is home to 2,805,473 people as of the 2020 US Census.

There are 424,210 current residents within 30-minutes of BLV, while more than 2.8 million live within 60-minutes of the Airport.

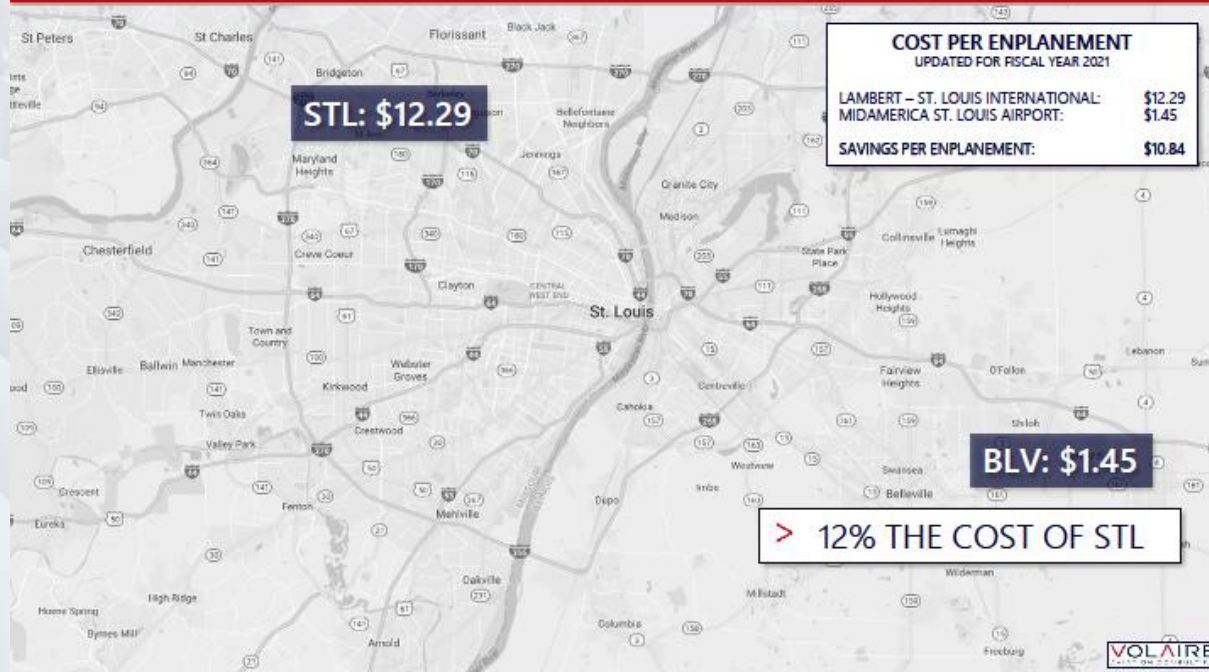


SOURCE: VOLAIRE AVIATION ANALYSIS OF US CENSUS DATA



Air Service Development

> MIDAMERICA'S COST PER ENPLANEMENT IS JUST \$1.45, WHICH IS ALMOST \$11 LESS PER ENPLANEMENT THAN LAMBERT



SOURCE: FAA FORM 127, UPDATED JUNE 2021





Air Service Development



> ALL OF THE POTENTIAL SHORT HAUL ROUTES USE LESS THAN 2.2 BLOCK HOURS, WITH MOST AT 2.0 BLOCK HOURS OR LESS



Air Service Development

 SECTION THREE
THE ST. LOUIS – MEXICO MARKET



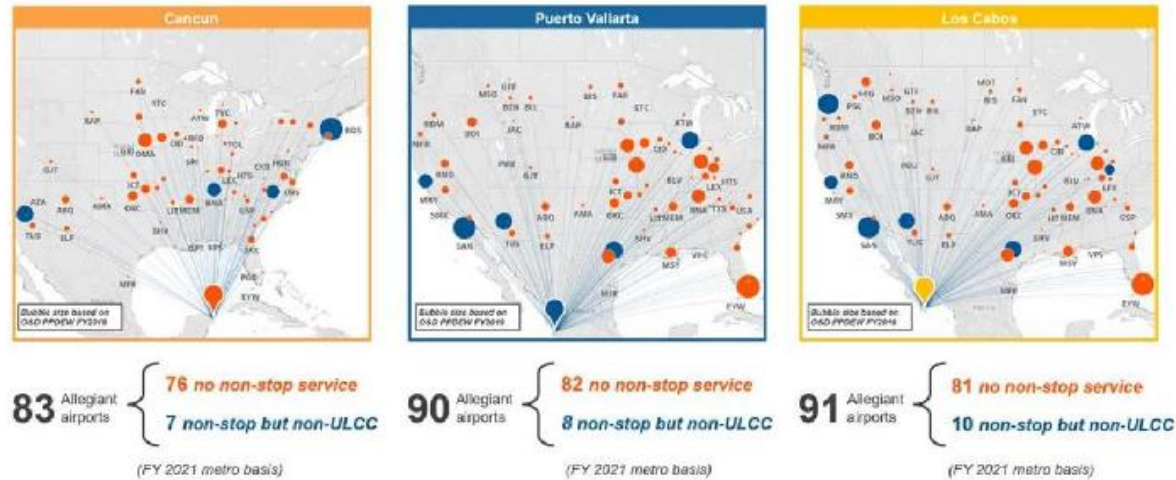
 18 

Air Service Development



MIDAMERICA ST. LOUIS AIRPORT STRONGLY SUPPORTS THE ALLEGiant – VIVA AERObUS JOINT VENTURE

Allegiant network vs. current Mexico service



Source: Schedules - Sabre GAD Market Intelligence
 Note: Includes all Allegiant airports as of FY2021 within 1,500mi range

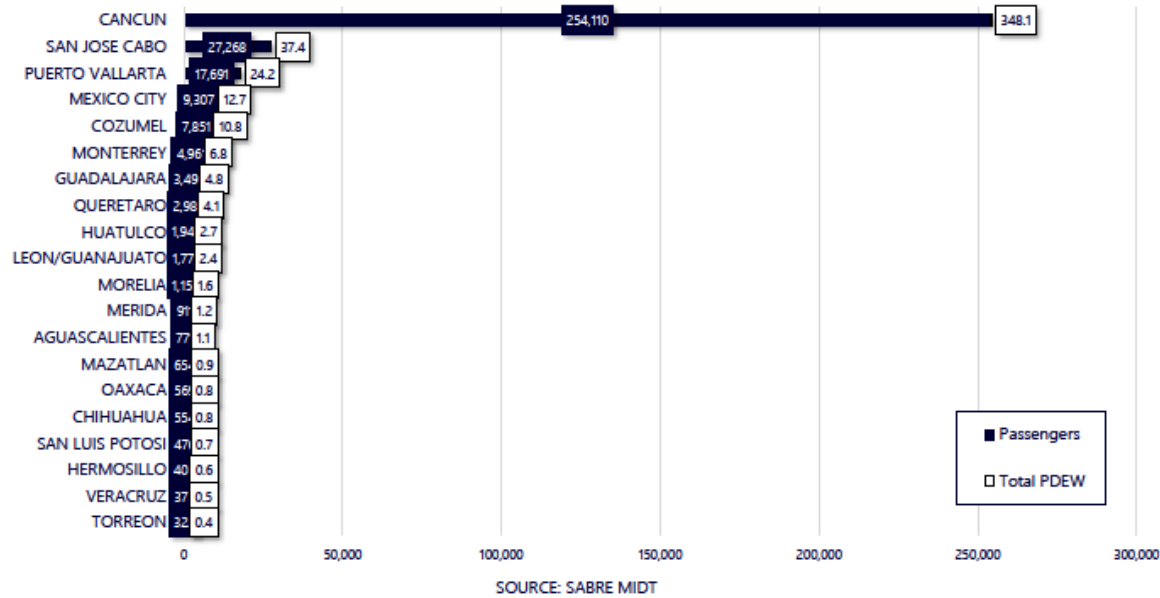
SOURCE: VOLAIRE AVIATION ANALYSIS



Air Service Development

> CANCUN IS ST. LOUIS' TOP MARKET IN MEXICO, WITH 75% OF ALL PASSENGERS, OR AN AVERAGE OF 348 PDEW

ST. LOUIS' TOP 20 O&D PASSENGER MARKETS IN MEXICO
YEAR ENDED THIRD QUARTER 2022 (INCLUDES BOTH BLV AND STL)



Terminal Expansion – Phase 3



Terminal Modification – Phase 3



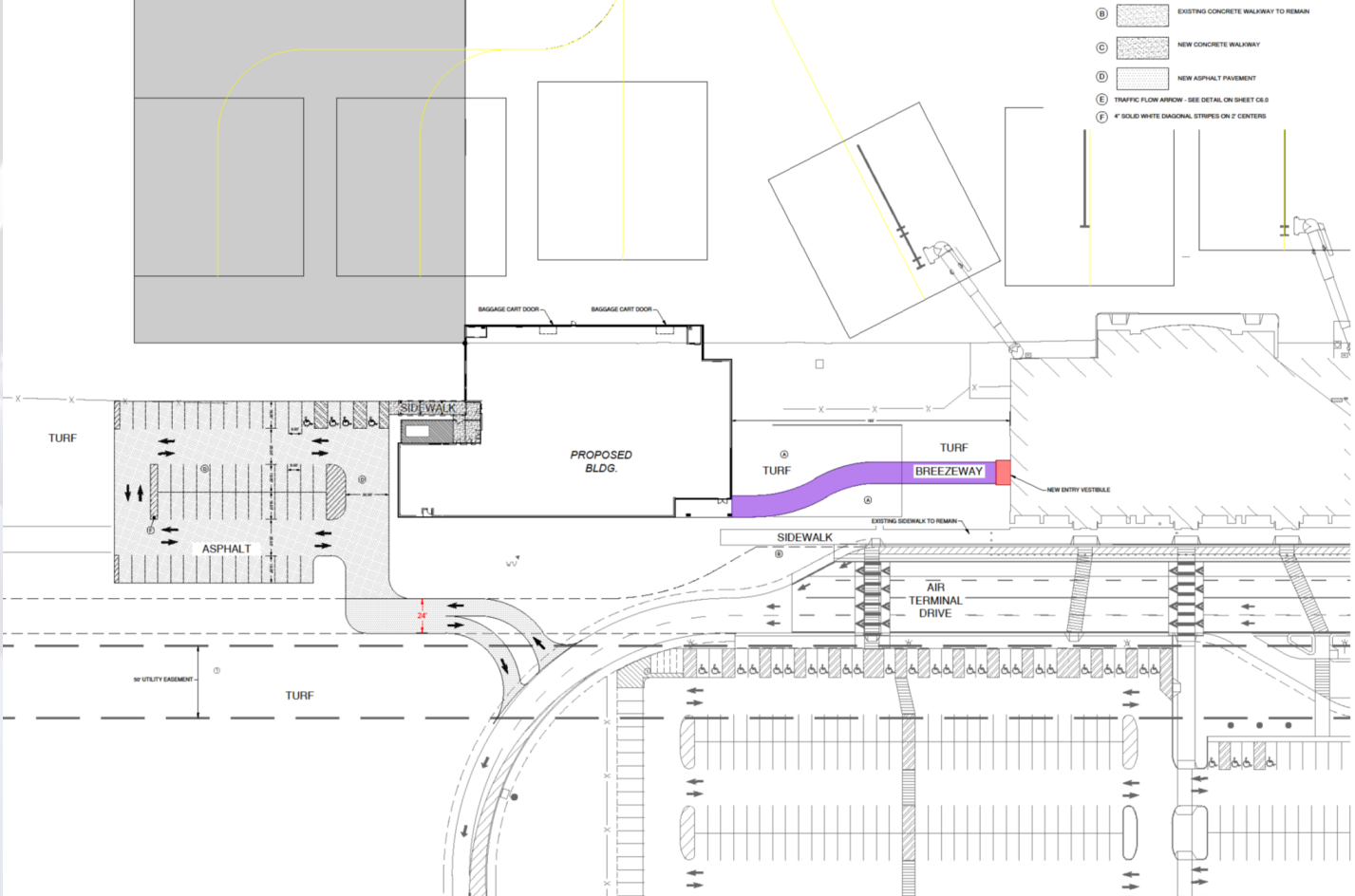
MidAmerica St. Louis – CBP / FIS



U.S. Customs - Project Achievements

- Increase Capacity and Passenger Access
- Compliance with ADA and expands accessibility for persons with disabilities (equity)
- Improves access for historically disadvantaged populations (MetroLink)
- Improves Energy Efficiency (LEED and Solar)
- Encourages actual and potential airline competition (USDOT - Allegiant & Viva Aerobus Alliance)
- Good paying jobs (PLAs)

Terminal Modification - Phase 4 | BLV

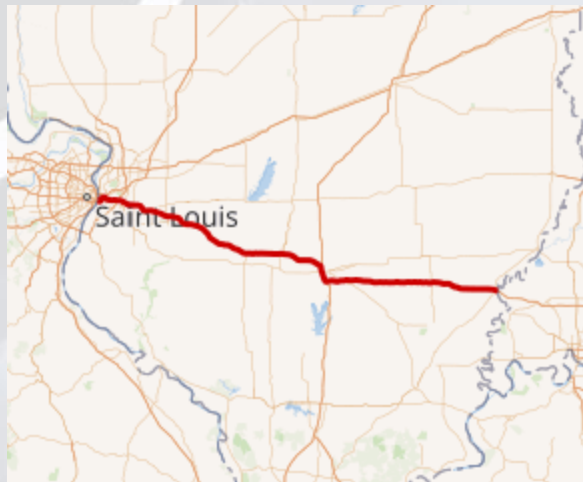


I-64 Alternative Fuels Corridor



- Designation of Interstate I-64 corridor will better position the region and surrounding communities to benefit from funding through the Charging and Fueling Infrastructure Program as well as the National Electric Vehicle Infrastructure (NEVI) Program
- Support the State's plan to strategically deploy Electric Vehicle charging infrastructure
- Further advance the goals of the Regional Electric Vehicle Midwest Coalition in achieving energy sustainability
- Increasing the availability of public charging infrastructure
- Making all communities more energy sustainable

I-64 Alternative Fuels Corridor



- I-64 / 130 miles from state to state (Missouri / Indiana)
- BLV to become a designated EV charging station location as part of the NEVI program
- BLV to incorporate EV charging stations at the terminal building for public use
- Enterprise Car Rental (BLV) to incorporate EV charging stations

Thank You!

Bryan Johnson, A.A.E.
Airport Director
MidAmerica St. Louis Airport
9656 Air Terminal Drive – Ste 250
Mascoutah, IL 62258
618.566.5240
bryan.johnson@flymidamerica.com

